

BLÜCHER® Channels

- for marine applications



BLÜCHER®

A **WATTS** Brand

We focus on **the well-being** of your guest



Well-being onboard

Clean and hygienic conditions in cabins, kitchens and sanitary facilities are important elements contributing to the efficiency and the sense of well-being onboard. Properly treated stainless steel has a unique smooth surface that guarantees maximum flow capacity and excellent hygiene. Due to its low surface roughness, bacterial growth on stainless steel is significantly less than on, for example, plastic and ordinary steel surfaces.



Freedom of choice

BLÜCHER® Channel stainless steel drainage channels are modular deck drainage solutions for use in galleys, pantries, door openings, outside deck areas, etc. Drainage channels are available to suit all deck finishes with a range of gratings developed to suit the varying load-bearing and flow demands. Outlets are available with a removable water trap and where applicable a filter basket to prevent solids discharging into the drainage system. Customised components are available on request.

- All in stainless steel
- Modular system providing numerous possible combinations
- Multi-adjustable
- Excellent hygiene and self-cleansing properties
- Exceptional flow
- Wide range of gratings



BLÜCHER®

A WATTS Brand

CHANNELS FOR MARINE APPLICATIONS **3**

We offer you a wide range of different **BLÜCHER® Channels**

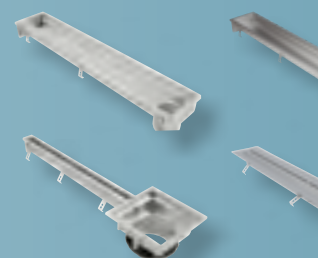
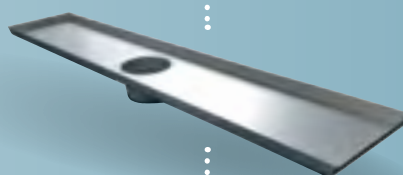
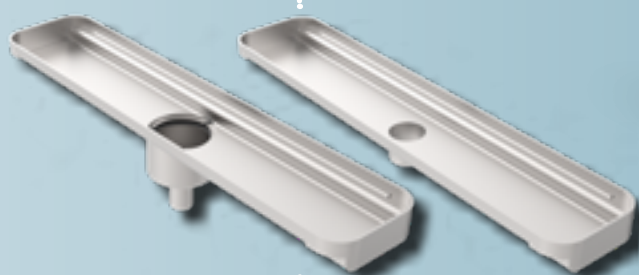
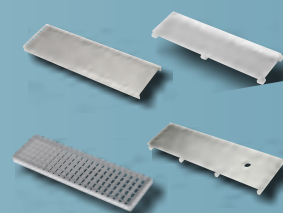
OceanLine



FlatLine



MarineLine



470.200.050 S
470.200.075 S
470.200.110 S



470.000.050 S
470.000.075 S
470.000.110 S



475.200.050 S
475.200.075 S



475.000.050 S
475.000.075 S

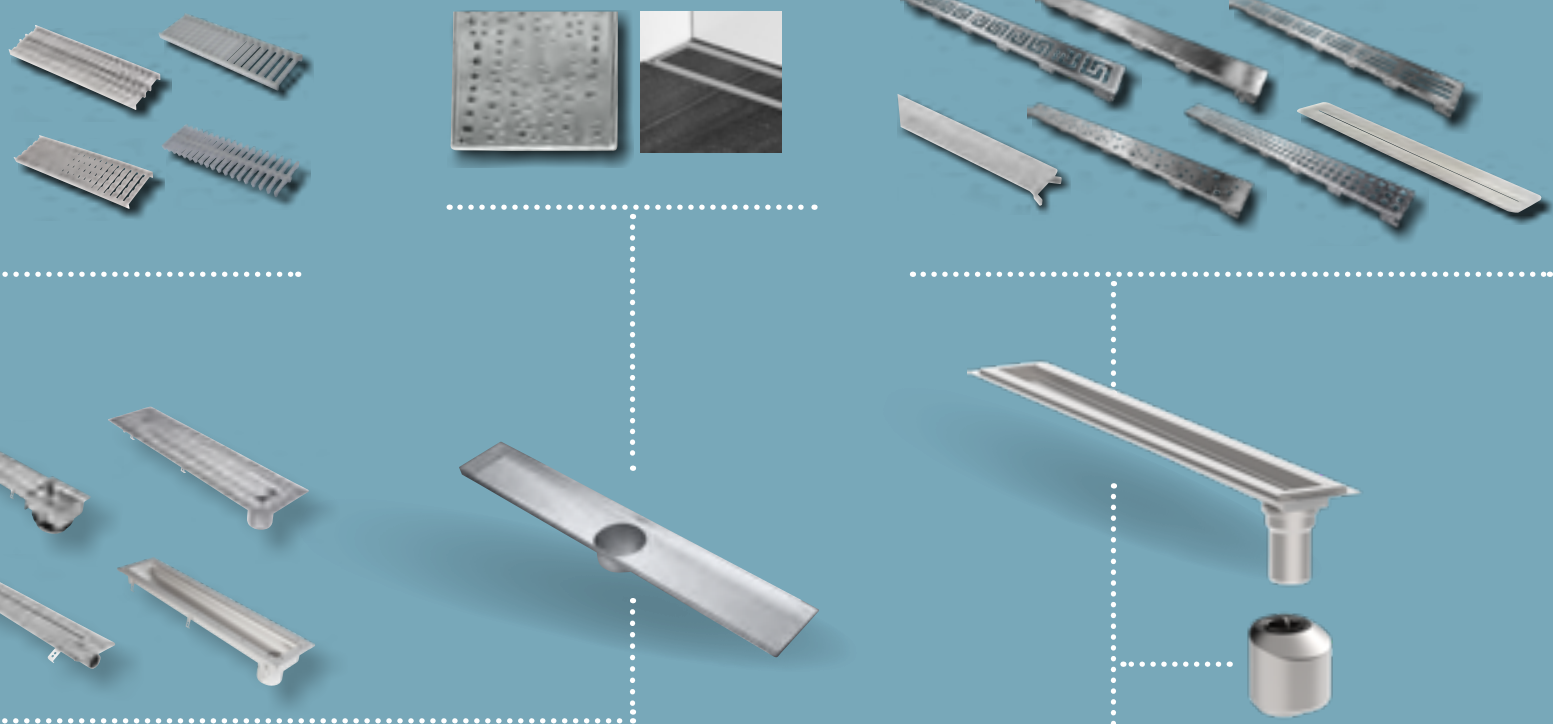


475.100.050 S

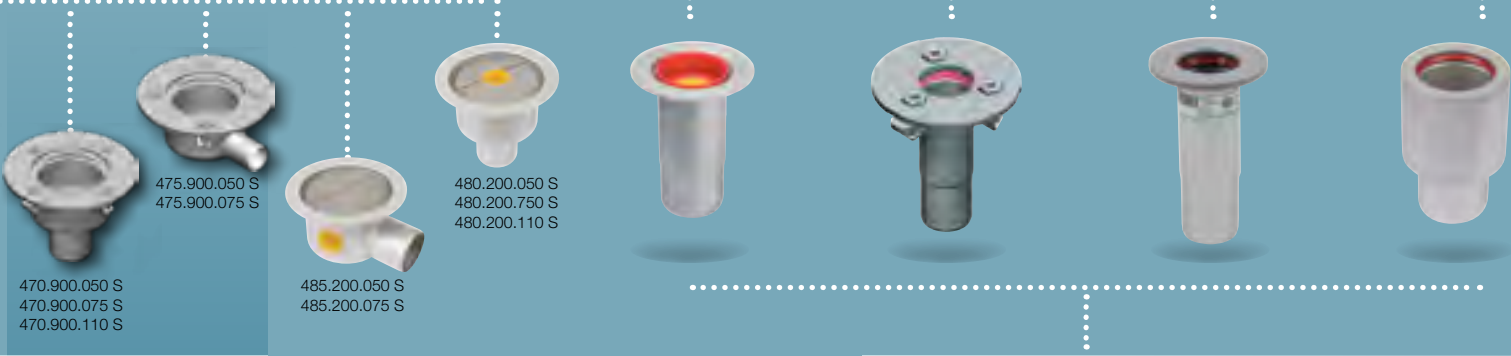
Steel deck

MultiLine

WaterLine



INSTALLATION
WITHOUT WELDING



Aluminum deck

Steel deck



BLÜCHER® OceanLine

- New channel design



NEW



OceanLine request form
Find it here: www.blucher-marine.com

Applications

- For galleys, pantries, door openings, outside deck areas, etc.
- For painted deck and covered deck

Highlights

- 5 mm material thickness for welding directly into deck
- Different variants of gratings
- Rounded corners

Details:

- Length: From 400 mm up to 3000 mm (straight runs)
- Width: 208 mm outside /198 mm inside
- Height: 61 mm
- 5 mm material thickness
- Stainless steel AISI 316L (EN 1.4404) & AISI 304 (EN 1.4301)
- Flat bottom



Channel outlet types:

TYPE 1

– with lower part (outlet box)

- Vertical or horizontal outlet
- Outlet pipe dimensions:
 - Ø50, 75, 110 mm or
 - Ø60,3, 76,1, 88,9 mm (thickwalled pipe for welding)
- Outlet placed in end or center

Options:



TYPE 2

– with outlet pipe

- Vertical outlet
- Outlet pipe dimensions:
 - Ø50, 75, 110 mm or
 - Ø60,3, 76,1, 88,9 mm (thickwalled pipe for welding)
- Outlet placed in end or center

Options:



only with Ø110 mm

Gratings:

O2 GRATING

Non-slip grating (9 mm holes)



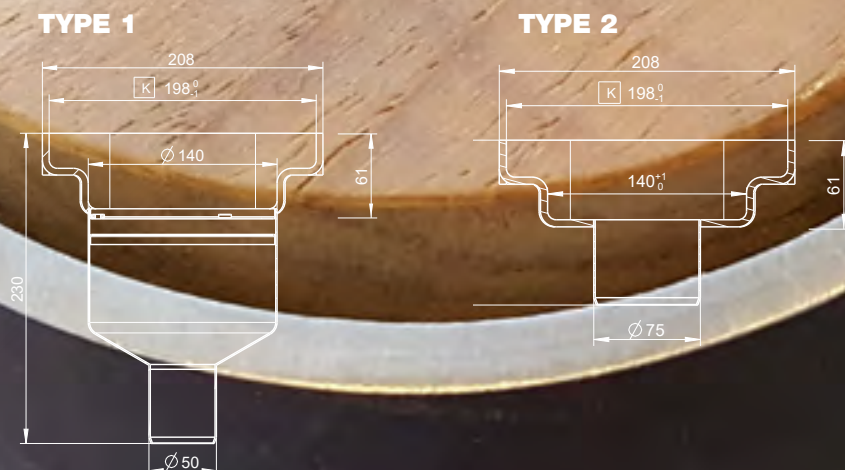
HIGH HEEL GRATING

Non-slip grating (7 mm holes)



SHOWER GRATING

(8x8 mm holes)



Water trap



P-trap



Filter basket



Filter plate

BLÜCHER®

A WATTS Brand



BLÜCHER® FlatLine

- Extra low channel



NEW



FlatLine request form
Find it here: www.blucher-marine.com

Applications

- For galleys, pantries, door openings, outside deck areas, bathroom, shower areas, luxury suites, etc.
- Available to suit most deck finishes

Highlights

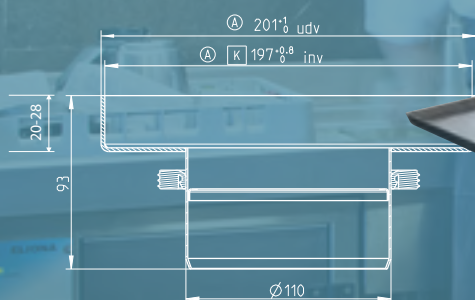
- Minimum height of 20 mm
- With 2 mm frame width on all four sides
- Elegant design

Details:

- Length: From 500 mm up to 6000 mm (straight runs)
- Width: 201 mm outside /197 mm inside
- Height: 28 mm outside – or 20 mm as a minimum
2 mm material thickness
- Stainless steel AISI 316L (EN 1.4404) & AISI 304 (EN 1.4301)
- Flat bottom
- To be used together with the BLÜCHER Marine lower parts

Outlet:

- Outlet pipe dimension is Ø110 mm
- Outlet placed in end or center



Options:



Water trap



Filter basket



Filter plate



Anchor tangs



Adjustable legs

Gratings:

SHOWER GRATING

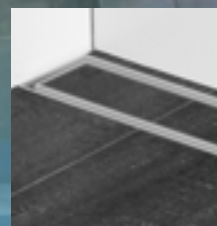
(8x8 mm holes)



STOCKHOLM GRATING

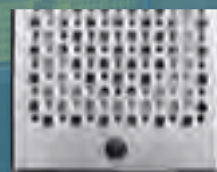


TOKYO GRATING



O2 GRATING

Non-slip grating
(9 mm holes)



HIGH HEEL GRATING

Non-slip grating
(7 mm holes)



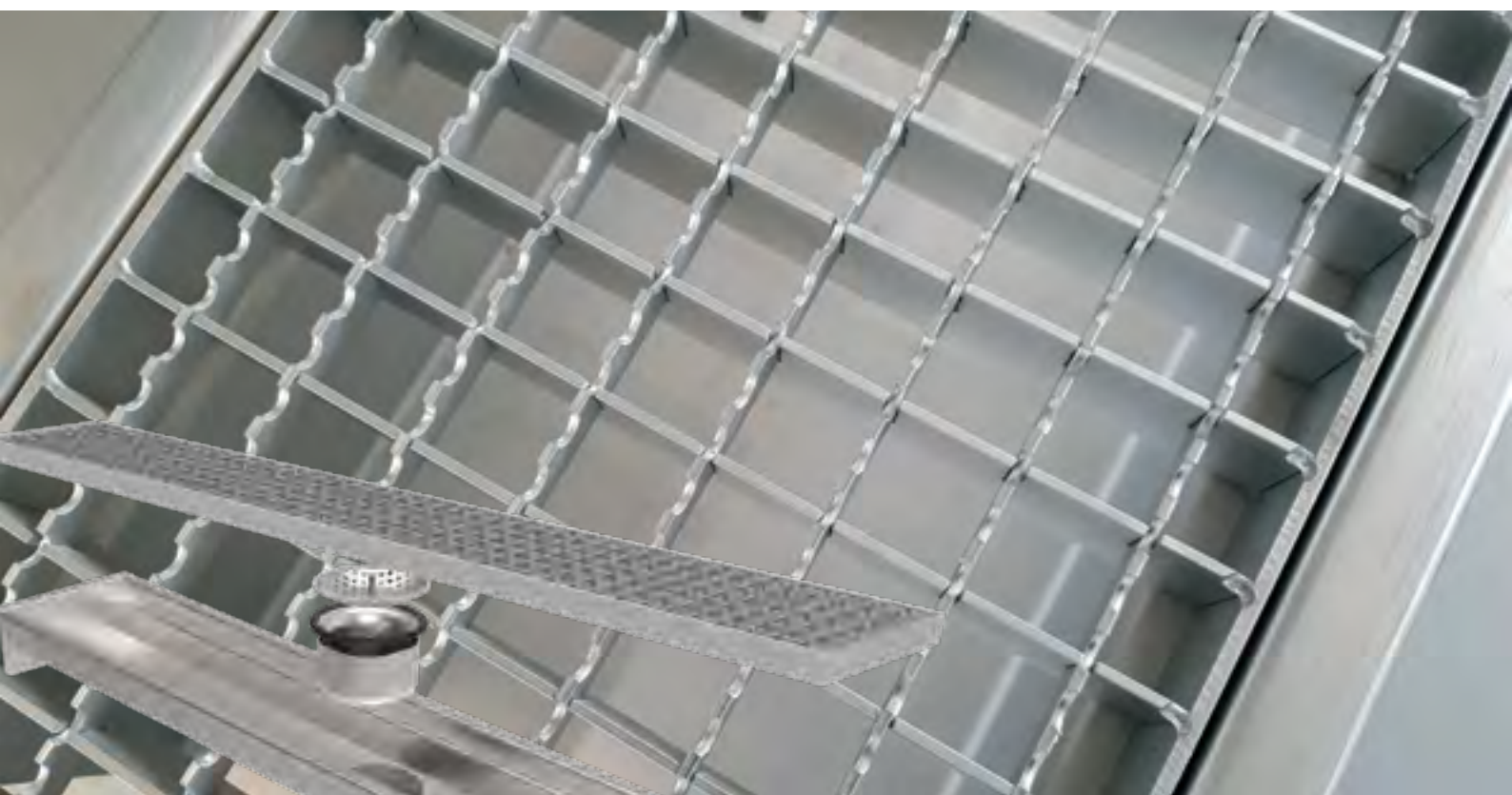
BLÜCHER®

A WATTS Brand



BLÜCHER® MarineLine

- Design your own solution



Applications

- For galleys, pantries, door openings, outside deck areas
- Available to suit all deck finishes

Highlights

- Standard or customised solutions
- Hygienic design
- Gratings for any purpose and load class



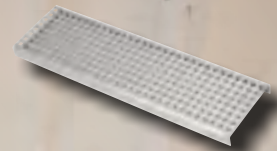
MarineLine request form
Find it here: www.blucher-marine.com

Details:

- Length: customized as per request
- Width: 150, 200, 300, 400, 500, 600, 700 and 800 mm
- Height: Minimum height 40 mm
2 mm material thickness
(Can alternatively be supplied as customized channels in 3-4 mm thickness for direct welding on deck. Please contact our Customer Center for further information).
- Stainless steel AISI 316L (EN 1.4404) & AISI 304 (EN 1.4301)
- All standard gratings can be installed
- Cross/Longitudinal fall for high self cleaning
- Channels in customized designs e.g. L, U and T shape
- To be used together with the BLÜCHER Marine lower parts

Gratings:

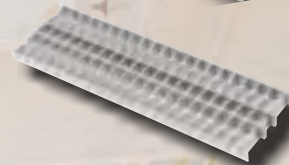
SHOWER GRATING



TILED/EPOXY GRATING



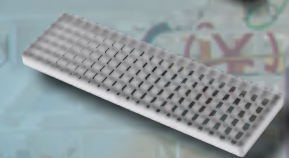
LADDER GRATING



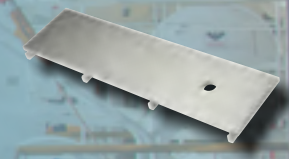
LADDER GRATING NON-TILT



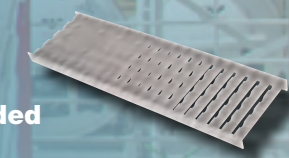
MESH GRATING



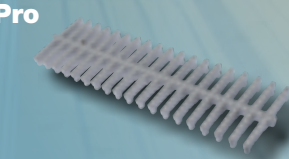
SLOT GRATING



LADDER GRATING fully welded

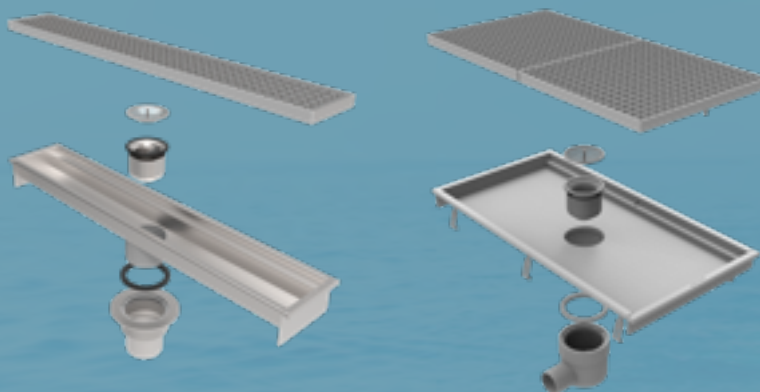


HygienicPro GRATING



Outlet:

- Outlet pipe dimension is Ø110 mm
- Outlet placed in end or center



Options:



Be inspired ...

Type 670 Channel for concrete, tiled and resin floors
Width: 150, 200, 300 or 400 mm
Length: 1 - 6 metres



Type 671 Channel with outlet box for concrete, tiled and resin floors
Width: 150 mm
Length: 1 - 6 metres



Type 673 20 mm slot channel with outlet box for concrete, tiled and resin floors
Width: 20 mm
Length: 1 - 12 metres
Grating: For outlet box only



Type 674 Channel with 50 mm liquid membrane flange for concrete, tiled and resin floors
Width: 150, 200, 300 or 400 mm
Length: 0,9 - 6 metres

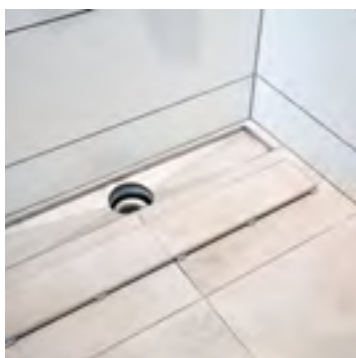


Type 677 8 mm slot channel with 50 mm liquid membrane flange for concrete, tiled and resin floors
Width: 8 mm
Length: 1-3 metres



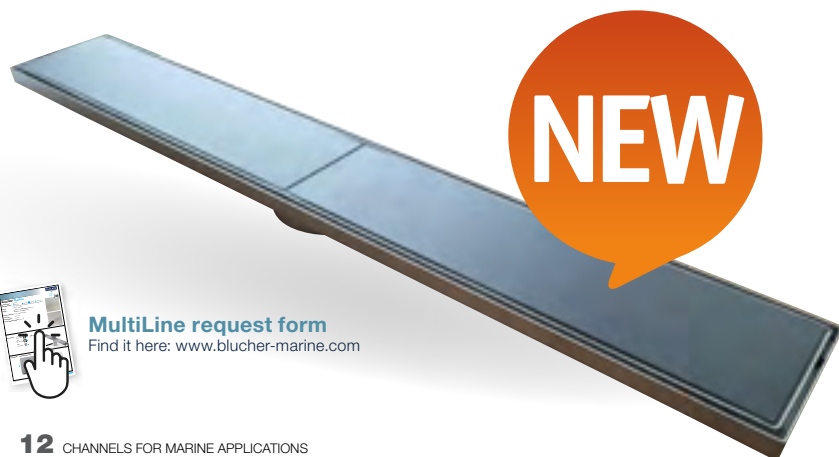
Type 672 Channel for vinyl floors
Width: 150, 200, 300 or 400 mm
Length: 0,9 - 6 metres





BLÜCHER® MultiLine

- Scandinavian elegance



MultiLine request form
Find it here: www.blucher-marine.com

Applications

- Inside door openings, bathroom, shower areas, luxury suites, etc.

Highlights

- Low height
- With 2 mm frame width on all four sides
- Elegant design

Details:

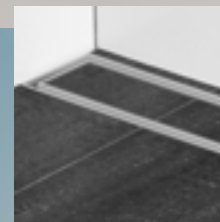
- Length: standard length of 800, 900, 1000 and 1200 mm
- Width: 132 mm outside
- Height: 17 mm for type Stockholm, and 21 mm for type Tokyo
- 2 mm material thickness
- Stainless steel AISI 304/ EN 1.4301
- Cross fall

Gratings:

STOCKHOLM GRATING



TOKYO GRATING



Outlet:

- Outlet pipe dimension is Ø110 mm
- Outlet placed in center

Installation:

This channel is meant to be installed together with one of the different BLÜCHER Marine lower parts. The Marine lower part will be installed in the deck - either by welding or by a screw solution. We always recommend to use a MED approved Marine lower part.

Options:



Water trap



Filter plate



Anchor tangs



Adjustable legs



P-trap

BLÜCHER®

A WATTS Brand



BLÜCHER® WaterLine

- design shower channel



Applications

- For bathroom, shower areas, wet cabins, luxury suites, inside door openings, etc.
- Available to suit most deck finishes

Highlights

- Elegant design
- Many different design gratings
- Full flexibility



WaterLine request form
Find it here: www.blucher-marine.com

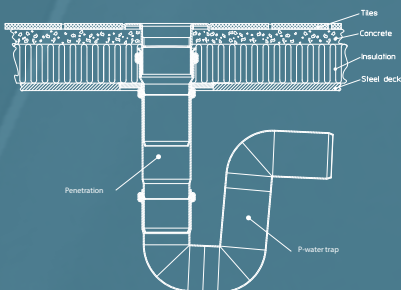
Details:

- **For tiled floor - with or without liquid or sheet membrane**
 - Standard length of 300, 700, 800, 900 and 1000 mm
 - Up to 2000 mm length as customized channel (Tokyo grating only 1000 mm)
 - 20 mm frame width
 - Adjustable frame height
 - Can be installed with outlet left or right and against wall(s) or away from wall(s)
- **For vinyl floor**
 - Standard length of 700, 800, 900 and 1000 mm (customized length not possible)
- All in stainless steel AISI 304/EN 1.4301
- Brushed finish

Options:

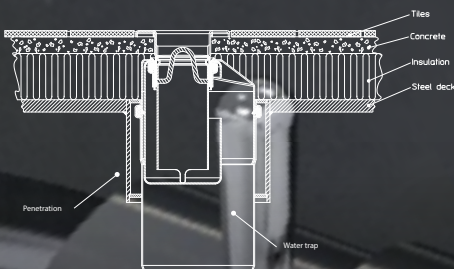
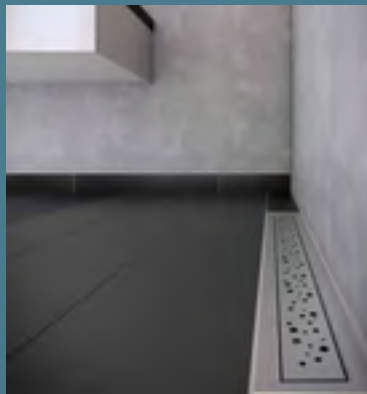
- Range of different water traps
- Different design gratings

Installation examples



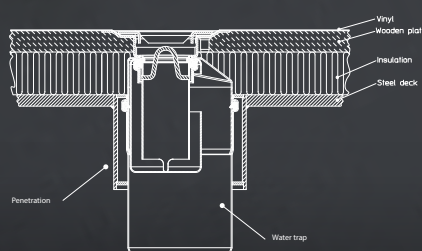
Tiled floor - P-water trap

BLÜCHER penetration type 868.105.050FS



Tiled floor - Built in water trap

BLÜCHER penetration type 870.000.110FS



Vinyl floor - Built in water trap

BLÜCHER penetration type 870.000.110FS

Gratings:

GRATING LINE ATHENS

GRATING LINE COPENHAGEN

GRATING LINE DETROIT

GRATING LINE TOKYO

GRATING LINE OSLO

GRATING LINE VIENNA

GRATING LINE COPENHAGEN VINYL



New Channel request forms

- Clear overview of options
- Build your own channel
- Fast and easy tool to complete specification sheets



BLÜCHER® EuroPipe
Stainless steel drainage pipework system



BLÜCHER®

A **WATTS** Brand

T: +45 99 92 08 00 • blucher-marine.com

© 2020 blucher-marine.com